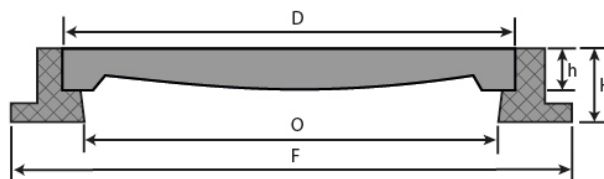
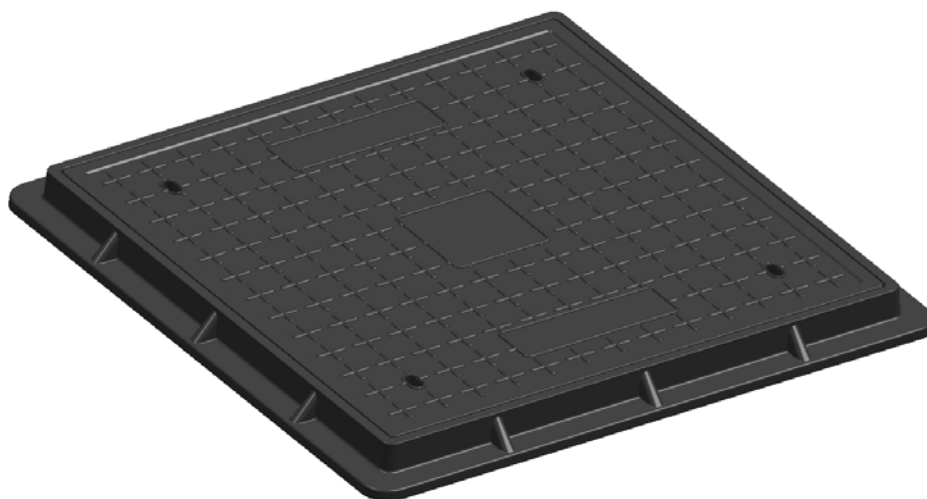


## MANHOLE COVER CRC-12

C-250



CODE	O (mm)	D (mm)	F (mm)	H (mm)	h (mm)	PH (mm)
<b>CRC-12</b>	900 x 900	1000 x 1000	1150 x 1150	75	55	900 x 900

\*PH: Manhole

### FEATURES:

- Manhole cover manufactured in **Composite**.
  - Complies **Norm EN-124, Class C-250**.
  - **Optional lock system** (lock with screw).
  - **Tough and durable**. Hardness, elasticity, the curvature and corrosion resistance. **Soundproofing Board**.
  - **Lighter**. A single worker can open and manipulate it without risk of injury.
  - **Less carbon emissions** and environmental protection.
  - **Non-slip surface**.
  - Suitable for **roadsides and parking areas**.
  - **Custom labeling** possibility.
- Available in **different colors**: Black / Grey / Blue / Green / Others.